



# MONTHLY MEMBERSHIP PROGRESS REPORT

District 19 E

Results as of: 01/31/2018

GMT: HOWARD HUDSON

LOCATION WASHINGTON

GMT CA

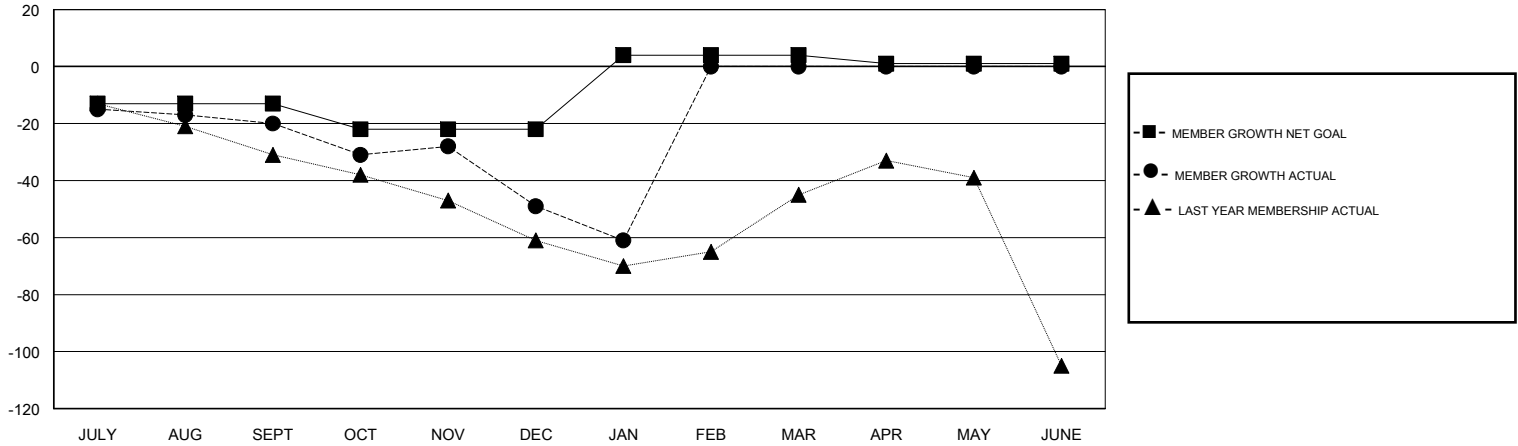
Clubs			
RESULTS FOR 2017-2018			
QUARTER	NEW CLUB GOAL	NEW CLUBS	DROPPED CLUBS
JULY/AUG/SEPT	0	0	0
OCT/NOV/DEC	0	0	1
JAN/FEB/MAR	1	0	0
APR/MAY/JUNE	0	0	0

Members			
RESULTS FOR 2017-2018			
QUARTER	MEMBER GROWTH NET GOAL	MEMBER GROWTH ACTUAL	DROPPED MEMBERS ACTUAL (including transfers)
JULY/AUG/SEPT	-13	43	56
OCT/NOV/DEC	-9	42	69
JAN/FEB/MAR	26	18	27
APR/MAY/JUNE	-3	0	0

GOALS AND ACTUAL NEW CLUBS CUMULATIVE



GOALS AND ACTUAL MEMBERS CUMULATIVE



DROPPED CLUBS: 1	29 CLUBS OF 50 ADDED 1 OR MORE NEW MEMBERS	<u>GENDER DISTRIBUTION</u> MALE 860 (64.81%) FEMALE 467 (35.19%) Women Percentage Fiscal Year Goal: 35%
<u>DROPPED MEMBERS</u> DECEASED 13 CLUB CANCELLED 7 OTHER 132 TOTAL 152	<a href="#">CLICK HERE FOR CUMULATIVE MEMBERSHIP DATA</a>	TOTAL FAMILY UNIT MEMBERS 381 FAMILY MEMBERS PAYING HALF DUES 195